



Public Health
England

A new infection has been detected in Wuhan, China

(Novel Coronavirus)

If you have been to Wuhan, China, in the last 14 days and develop **ANY** of these symptoms, contact a healthcare professional

Any of



Cough



**Runny
nose**



**Sore
throat**



Fever



**Difficulty
breathing**

If you develop symptoms within 14 days of travel to Wuhan, please stay indoors and avoid contact with others where possible. Ring 111 or call your GP and tell them that you have travelled to Wuhan, for free advice and treatment.



Public Health
England

一种新型感染在中国武汉被发现

(新型冠状病毒)

如果您在过去14天内去过中国武汉,并且出现以下
任何症状之一,请与医疗保健专业人员联系。

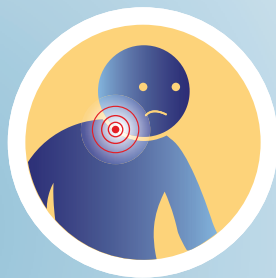
任何之一...



咳嗽



流鼻水



喉咙疼



发烧



呼吸困难

如果您在前往武汉的14天内出现症状,请呆在室内,并尽可能避免与他人接触。拨打111或致电您的家庭医生,告诉他们您曾经去过武汉,以获得免费咨询和治疗。